

Updates to Existing Architectural Styles

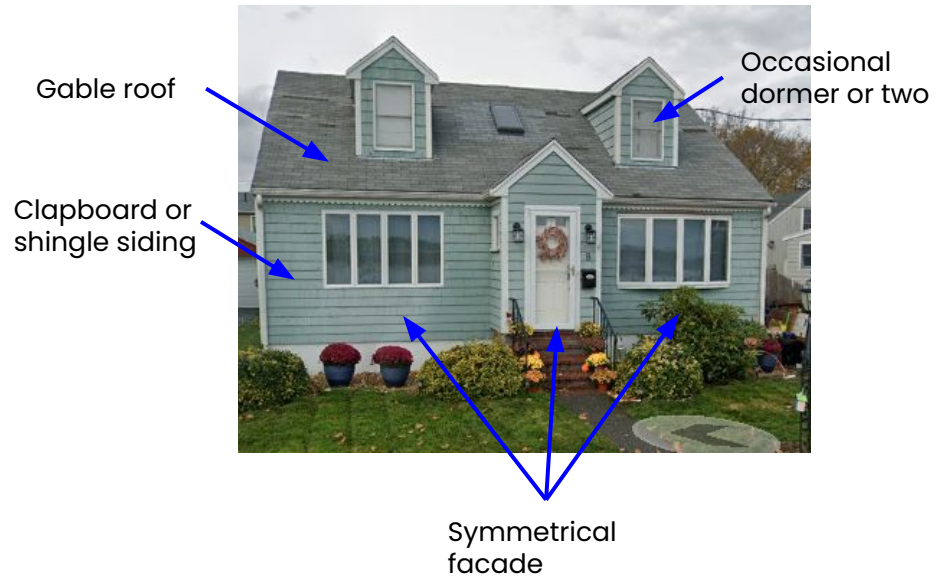
HSI Homeowners Handbook

20th Century Colonial Revival*

*Although an extension of the Colonial Revival style originating in the late 19th century, the house styles built in the mid 20th century are the most commonly seen form in the area and deserve their own recognition. Colonial Revival details were commonly applied to otherwise Victorian houses. Colonial Revival blended with the Craftsman style to produce the Shingle Style, a form not commonly seen in Salem.

Cape Cod, Cape 1930-1960

The 1930s saw a renewed resurgence in Colonial styles and forms. Original 17th and 18th century colonial houses were easily adaptable given their simple shape. Toward the end of WWII, developers anticipated a need for housing for returning veterans. Turning to reliable early American designs, they revived the modest Cape Cod, or Cape style house which was inexpensive and easily mass-produced. New developments in the suburbs outside of town, now linked by highways, were populated with almost exclusively Cape Houses.



Ranch 1950-1980

These sprawling single story houses gained initial popularity where land was plentiful in the South and Midwest US in the 1920s but didn't become popular here in the Northeast til after 1950. Their one-story floor plan made it very adaptable to personal taste and layout



Split-Level (Ranch variant) 1950-1980

Main entrance in between the two stories

Two stories tall, sometimes the lower story is half-buried in the ground and part of the foundation

