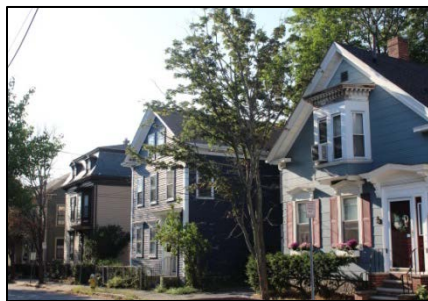


## Bridge Street Neck



### Historic Highlights

- McIntire-designed Thomas March Woodbridge House
- Well-preserved collection of Federal, Greek Revival and Victorian-era homes
- Former industrial area
- Collins Cove
- Bridge Street – former Ferry Lane (est. 1743)

### Preservation Activity

- Bridge Street National Register Historic District
- 448 resources documented on historic resources inventory forms

### Recommendations

- Consider designation as a NPD or LHD

### **Preservation Opportunities & Concerns**

Located on a narrow peninsula of land between Salem's downtown, the Danvers River and Beverly Harbor, Bridge Street Neck was one of the earliest areas to be settled in Salem with Bridge Street serving as the primary transportation route from Salem to communities to the north. The neighborhood is now a densely-settled neighborhood of 19<sup>th</sup> and early 20<sup>th</sup> century residences surrounding the commercial corridor of Bridge Street, which contains a diverse collection of historic commercial buildings and converted residences.

The listing of Bridge Street Neck Historic District in the National Register in 2002 highlighted the historical significance of this early neighborhood and residents are actively engaged in efforts to restore their historic homes. The City has also completed infrastructure improvements to Bridge Street, which serves as one of the city's primary entrance corridors. Previous planning studies by the City identified the Bridge Street Neck neighborhood as a potential Neighborhood Preservation District. Attendees at meetings held in support of this Plan expressed concern that commercial development along the spine of Bridge Street could have negative impacts on the adjoining residential neighborhood without thoughtful consideration of design and use.